

Gulf of Mexico Marine Debris Project Interactive Mapping Server

Storm surge and winds from Hurricane Katrina left enormous amounts of wreckage and waste in the northern Gulf of Mexico. Hidden from view, sunken marine debris poses a hazard to boats and fishing gear.



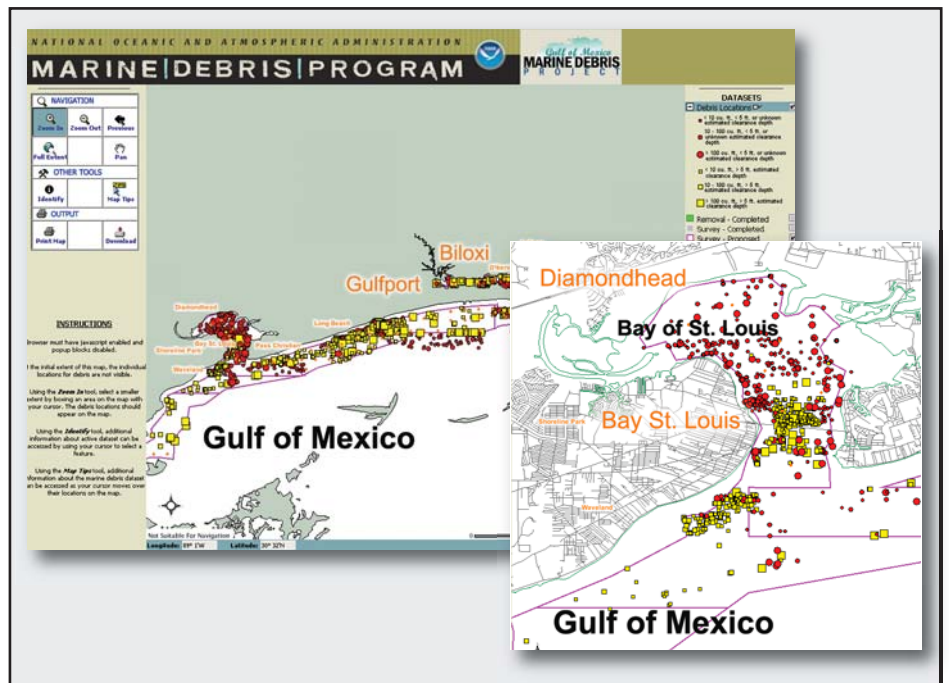
In September 2006, the National Oceanic and Atmospheric Administration (NOAA) began conducting underwater surveys off the coasts of Louisiana, Mississippi, and Alabama. The data collected from these surveys were used to create printable debris maps to assist boaters and guide debris removal. These maps are available on line at the Gulf of Mexico Marine Debris Project web site (<http://gulfofmexico.marinedebris.noaa.gov>).

NOAA's National Coastal Data Development Center (NCDDC) supports this effort by hosting this web site. NCDDC also created an Interactive Mapping Server that allows users to focus on a small area and to highlight unique

information contained in data layers such as debris location, buoy positions, and bathymetry. The maps are also updated as debris removal progresses.

Marine Debris Interactive Mapping Server

Red and yellow markers show the location of marine debris. Red markers show a clearance of 5 feet or less. Yellow markers show a clearance of greater than 5 feet. The larger the marker, the larger the volume of debris at that location.



NOAA's Marine Debris Program, Office of Response and Restoration, and Office of Coast Survey, and state National Sea Grant offices, are leading a public outreach effort, which includes the Gulf of Mexico Marine Debris Project web site. Additionally, the Gulf of Mexico Marine Debris Project team will produce planning documents to aid in the aftermath of future storms.

For more information:

- Nir Barnea, NOS Office of Response and Restoration (nir.barnea@noaa.gov)
- Rost Parsons, PhD, NCDDC Chief Scientist (rost.parsons@noaa.gov)
- Please visit the website: <http://gulfofmexico.marinedebris.noaa.gov/>

